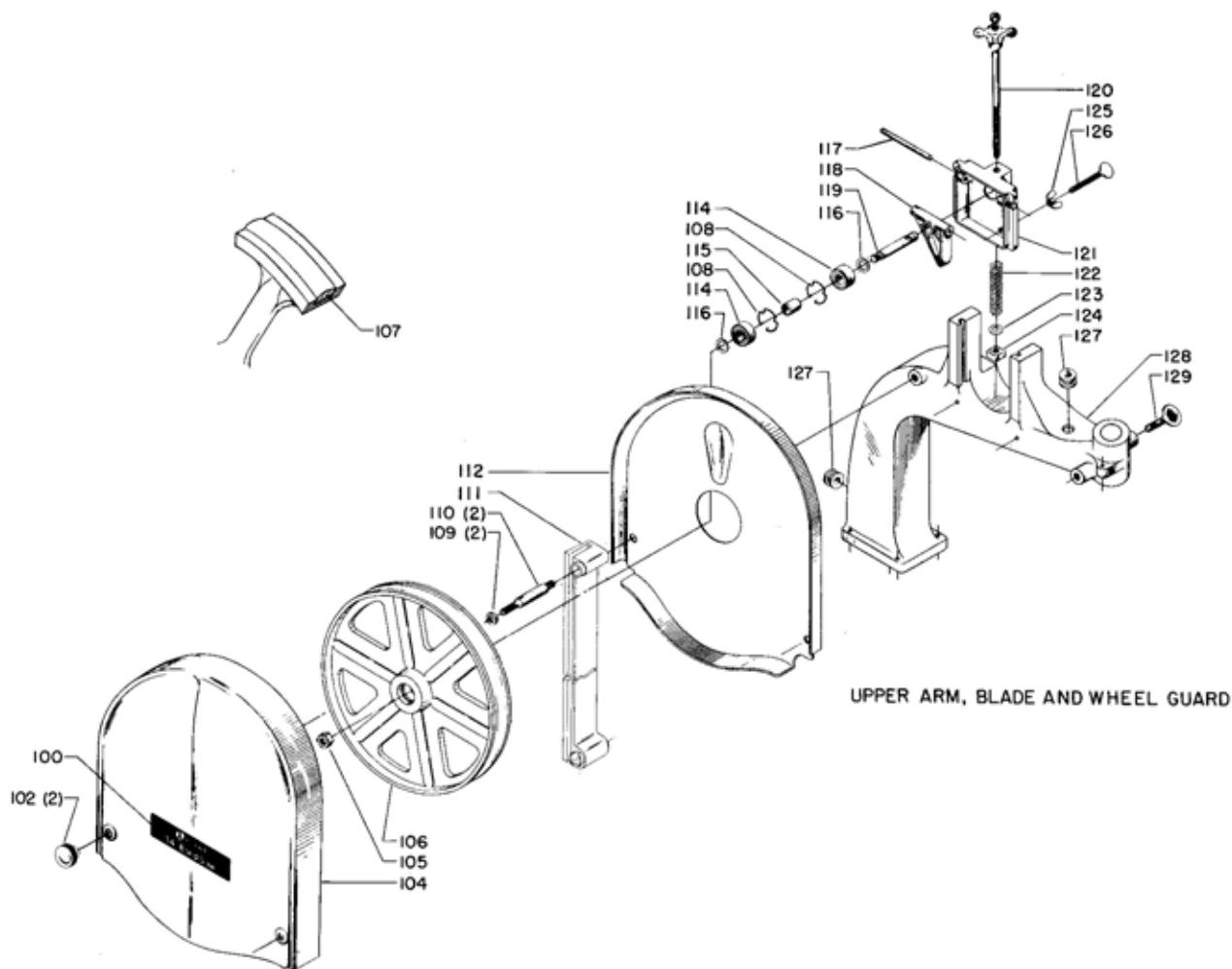


TABLE, TRUNNIONS, AND GUIDE PARTS

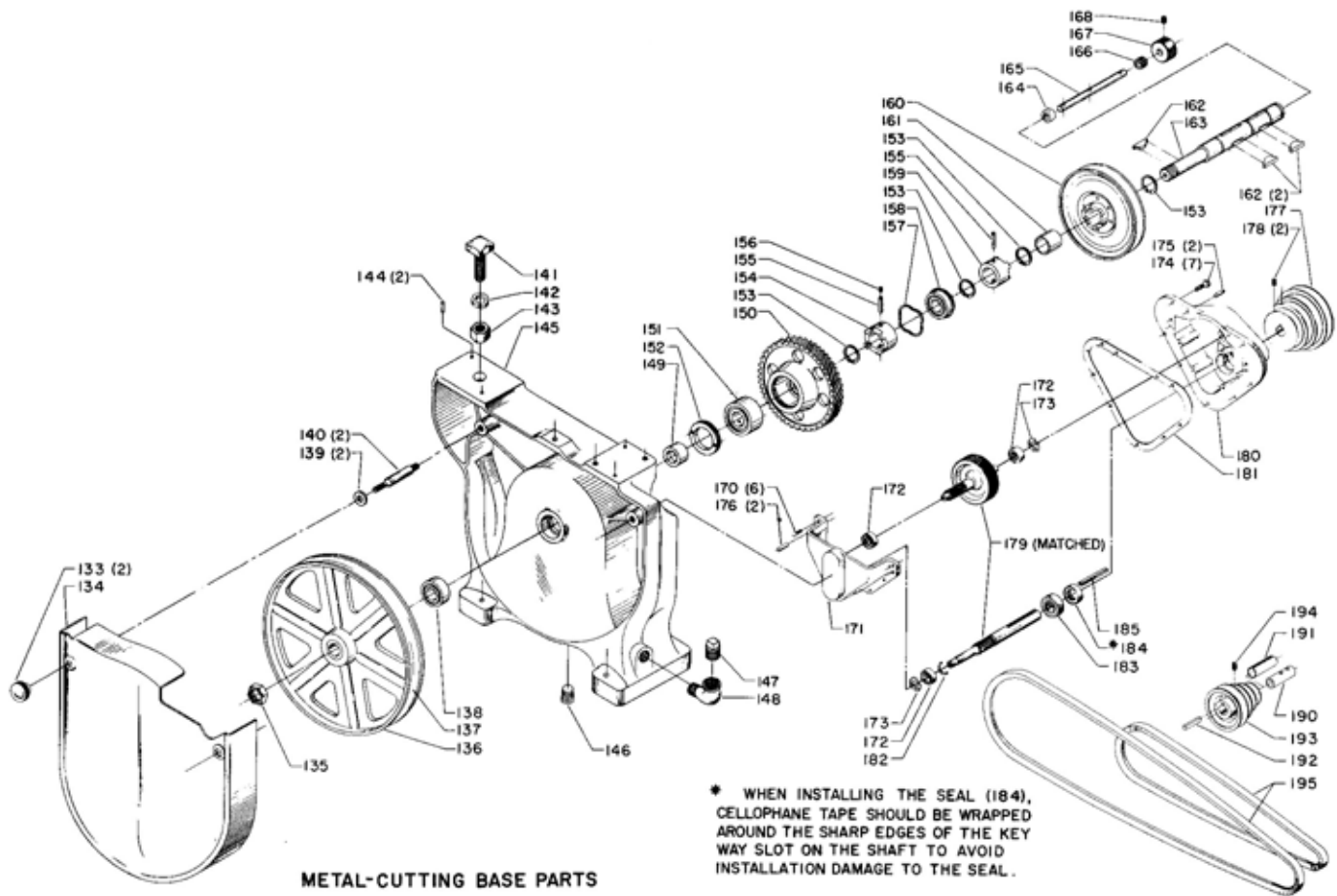
Ref. No.	Part No.	Description	Ref. No.	Part No.	Description
1	LBS-58	Table	32	SP-1603	1/4 x 9/16 x 3/64" Stl. Washer
2	LBS-55	Tapered Table Pin	33	SP-1029	1/4"-20 Hex Nut
3	SP-625	7/16-14 x 2 1/4" Hex. Hd. Cap Scr.	34	LBS-132	Blade Guide Block
4	SP-631	7/16-14 x 4" Hex. Hd. Cap Scr.	35	SP-225	5/16-18 x 1/4" Soc. Hd. Set Scr.
5	LBS-61	Trunnion Clamp Shoe	36	LBS-160	Support Bracket for Lower Guide
6	LBS-60	Trunnion	37	LBS-161	Wedge for Lower Guide Bracket
7	LBS-60-S	Trunnion, Including:	38	LBS-166	Coil Spring
8	LBS-62	Scale	39	LBS-163	Shaft for Lower Support Bearing
9	903-01-102-2693	Alum. Rivet	40	LBS-153	Angle Guide Block
10	SP-1603	1/4 x 9/16 x 3/64" Steel Washer	41	SP-5352	Bearing
11	SP-612	1/4-20 x 5/8" Hex. Hd. Cap Scr.	42	960-02-012-1441	Nameplate (Metal Cutting Model)
12	LBS-4	Removable Base Table Stop	43	SP-2250	#4 x 3/16" Drive Screw
13	SP-602	5/16-18 x 1 1/4" Fil. Hd. Cap Scr.	50	1087780	15/16 x 10" Rnd. Guide Post
14	SP-6711	1/8 x 3/8" Roll Pin	50	LBS-126	7/8 x 10" Hex. Guide Post (Models made prior to 1974)
15	LBS-10	Trunnion Support Bracket			
16	BM-45	13/32" Spring Washer	*	LBS-127-A	Upper Blade Guide, Consisting of:
17	LBS-170	25/64" Fiber Washer	51	LBS-127	Bracket
18	LBS-167-S	Adjusting Screw w/Knob	52	SP-5352	Bearing
19	SP-7562	#10-32 x 5/16" Rd. Hd. Scr.	53	SP-509	1/4-20 x 1/2" Rd. Hd. Scr.
20	SBS-46	Pointer	*	LBS-131-S	Bracket w/Guide Blocks, Consisting of:
21	SP-1606	7/16 x 1 x 5/64" Steel Washer	54	LBS-131	Guide Block Bracket
22	NCS-33	Spring	55	SP-225	5/16-18 x 1/4" Soc. Hd. Set Scr.
23	NCS-32	Hand Knob	56	LBS-132	Blade Guide Block
24	LBS-169-S	Set Collar, Including:	57	LBS-129	Headless Set Scr.
25	SP-101	1/4-20 x 1/4" Headless Set Scr.	58	LBS-130	Knurled Nut
26	SP-105	5/16-18 x 2" Headless Set Scr.	59	SP-207	5/16-18 x 1/2" Flt. Hd. Scr.
27	SP-5435	5/16-18" Hex. Jam Nut	60	LBS-128	Hex Shaft
28	SP-408	5/16-18 x 3/4" Flat Hd. Scr.	61	SP-514	1/4-20 x 3/8" Rd. Hd. Scr.
*	LBS-160-S	Lower Blade Guide, Consisting of:	62	SP-1528	5/16-18 x 1" Thumb Scr.
29	LBS-165	Rail for Lower Guide Bracket	63	SP-1520	5/16-18 x 1/2" Thumb Scr.
30	LBS-164	Spacing Sleeve	64	LBS-180	Sliding Blade Guard
31	LBS-162	Adj. Link for Support Bracket	65	LBS-265	Steel Insert



UPPER ARM, BLADE AND WHEEL GUARD

Ref. No.	Part No.	Description	Ref. No.	Part No.	Description
100	1088277	Nameplate	116	240-19	19/32 x 7/8 x 1/16" Washer
102	1087256	Knob	*	LBS-102-S	Sliding Bracket, Consisting of:
104	LBS-187	Upper Wheel Guard	117	LBS-103	Steel Pin
105	SP-1227	1/2-20 Hex Jam Nut	118	LBS-101	Upper Wheel Shaft Hinge
106	LBS-290-R	Upper Wheel, Including:	119	LBS-110	Upper Wheel Shaft
107	LBS-81	Tire	120	LBS-104-S	Blade Tension Screw with Star Wheel
108	LBS-108	Bearing Retainer	121	LBS-102	Upper Wheel Sliding Bracket
109	SP-1615	13/32" Steel Washer	122	LBS-105	Coil Spring
110	LBS-283	Stud	123	LBS-112	13/32" Fiber Washer
111	1087232	Cycloc Guard	124	LBS-111	Sq. Nut
112	LBS-189	Upper Wheel Guard Pan	125	SP-1403	5/16-18 Wing Nut
** 114	370-22-2	Bearing	126	LBS-106	5/16-18 x 2-1/4" Thumb Scr.
** 114	SP-5336	Bearing	127	LBS-27	Rubber Grommet
** 115	1088176	Spacing Sleeve	128	426-02-089-0005	Upper Frame Arm
** 115	LBS-109	Spacing Sleeve	129	SP-1531	7/16-14 X 1-1/4" Thumb Scr.

** MODELS MADE PRIOR TO 1974 USE BEARINGS, SP-5336 AND SPACING SLEEVE, LBS-109. BEARINGS, 370-22-2 AND SPACING SLEEVE, 1088176 MAY BE USED IN OLDER MODELS IF THEY ARE USED TOGETHER AND WITH REQUIRED WASHERS, 240-19. INDIVIDUAL PARTS ARE NOT INTERCHANGEABLE.



Ref. No.	Part No.	Description	Ref. No.	Part No.	Description
133	1087256	Knob	162	SP-2640	#808 Hi-Pro Key
134	LBS-186	Lower Wheel Guard	163	LBS-291	Shaft
135	BS-224	L. H. Hex Nut	164	426-03-017-0003	Felt Bushing
136	LBS-289-S	Lower Wheel, Including:	165	LBS-297	Shifter Rod
137	LBS-81	Tire	166	LBS-300	Threaded Bushing
138	SP-5398	Bearing	167	LBS-298	Knob
139	SP-1615	13/32" Steel Washer	168	SP-261	5/16-18 x 5/16" Soc. Hd. Set Scr.
140	LBS-283	Stud	170	SP-559	#10-32 x 1/2 Rd. Hd. Scr.
141	SP-2362	3/4-10 x 2" Sq. Hd. Bolt	171	LBS-274	Cover
142	SP-1707	3/4" Lockwasher	172	SP-5375	Bearing
143	SP-1027	3/4"-10 Hex Nut	173	SP-7354	Bearing Loading Spring
144	SBS-8	Tapered Dowel Pin	174	SP-626	1/4-20 x 3/4" Hex Hd. Cap Scr.
145	LBS-287	Base	175	SBS-8	Tapered Dowel Pin
146	SP-2438	1/8" Pipe Plug	176	SP-5075	1/4 x 3/4" Roll Pin
147	SP-2437	1/2" Pipe Plug	177	Cat. #41-724	Pulley, Including:
148	SP-3545	1/2 x 1/2 x 90 Degree Street Elbow	178	SP-201	5/16-18 x 5/16" Soc. Hd. Set Scr.
149	LBS-293	Spacer	179	LBS-272-S	Intermediate Gear w/Shaft (Matched)
*	LBS-292-S	Gear, Consisting of:	180	LBS-275	Gear Housing
150	LBS-292	Gear	181	LBS-205	Gasket
151	SP-5397	Bearing	182	SP-7047	Retaining Ring
152	LBS-299	Retainer Nut	183	SP-5374	Bearing
153	SP-7420	Retaining Ring	184	SP-5253	Seal
154	LBS-294	Clutch	185	SP-2651	3/16 x 3/16 x 2 1/8" Key
155	SP-2732	5/32 x 1" Roll Pin	190	426-03-017-0002	3/4 to 1/2" Reducing Bushing
156	901-04-150-9417	#10-32 x 3/16 Soc. Hd. Set Scr.	191	426-03-017-0004	3/4 to 5/8" Reducing Bushing
157	LBS-301	Washer	192	927-03-101-8019	1/4 x 3/16 x 1 1/4" Key
158	SP-5399	Bearing	193	Cat. #41-714	Motor Pulley, Including:
159	LBS-295	Clutch	194	SP-201	5/16-18 x 5/16" Soc. Hd. Set Scr.
160	LBS-296-S	Drive Pulley, Including:	195	Cat. #49-111	V-Belt (Matched set of 2 belts)
161	LBS-303	Bushing		Cat. #28-062	Band Saw Blade (Not Shown)

* NOT SHOWN ASSEMBLED